

PREPARED BY:

Bradley E. Stockham
BRADLEY E. STOCKHAM, PSM 6390


7-19-2007
DATE

GENERAL NOTES:

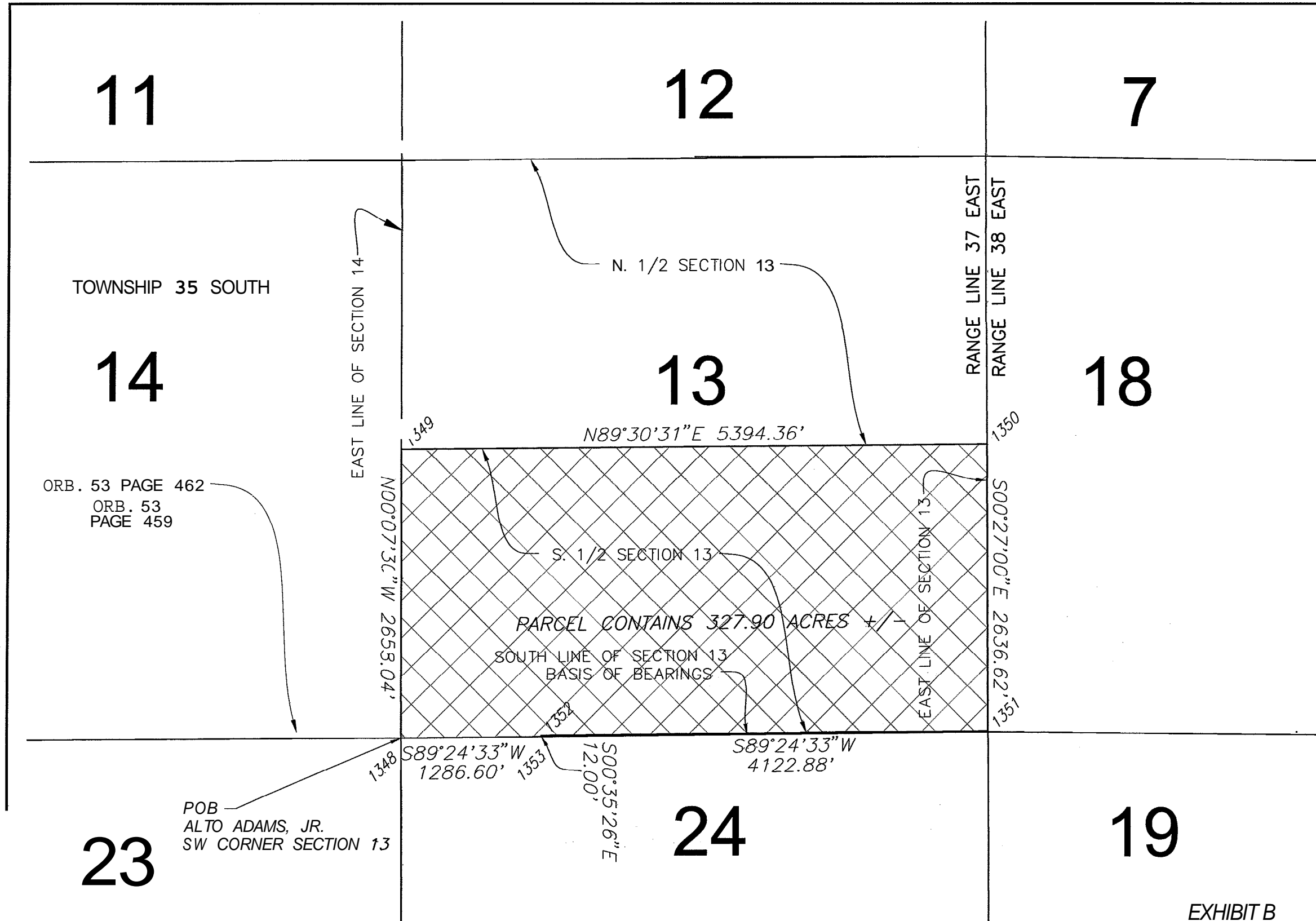
1. ALL DIMENSIONS ARE IN FEET AND DECIMALS THEREOF, UNLESS OTHERWISE NOTED.
2. NOT VALID WITHOUT THE SIGNATURE AND THE ORIGINAL RAISED SEAL OF A FLORIDA LICENSED SURVEYOR AND MAPPER.
3. BEARINGS ARE WISED ON THE SOUTH LINE OF SECTION 13, TOWNSHIP 35 SOUTH, RANGE 37-EAST, ST. LUCIE COUNTY, FLORIDA, BEING SOUTH 89°24'33" WEST.
4. CERTIFICATE OF AUTHORIZATION #LB-43
5. PARCEL CONTAINS 327.90, MORE OR LESS.
6. SUBJECT TO EASEMENTS, RESERVATIONS AND RESTRICTIONS OF RECORD.
7. THIS SKETCH MAY HAVE BEEN REDUCED.
8. THIS SKETCH AND DESCRIPTION ARE WISED PRIMARILY ON THE SURVEY OF ADAMS RANCH PREPARED BY LBFH, DATED 07/17/06 AND REVISED 02/08/07.
9. LINES AND COORDINATES ALONG THE PERIMETER OF THE PARCEL DESCRIBED ARE LABELED CONSECUTIVELY, IN SOME AREAS LABELS MAY BE OMITTED FOR CLARITY.
10. ABSTRACT AND NOT REVIEWED.

ABBREVIATIONS:

Lxxx = LINE NUMBERS - BEARING AND DISTANCES
 xxx = POINT NUMBERS FOR ANGLE VERTICES - STATE PLANE
 COORDINATES IN NAD 83, FLORIDA EAST ZONE
 ORB = OFFICIAL RECORDS BOOK
 P.O.B. = POINT OF BEGINNING
 P.O.C. = POINT OF COMMENCEMENT

 = ALTO ADAMS, JR.
 CONTAINS 329.04 AC. +/-

COORDINATE TABLE		
POINT#	NORTHING	EASTING
1348	1124346.45	787269.17
1349	1127004.48	787263.37
1350	1127050.75	792657.53
1351	1124414.22	792678.24
1352	1124371.71	788555.58
1353	1124359.71	788555.70



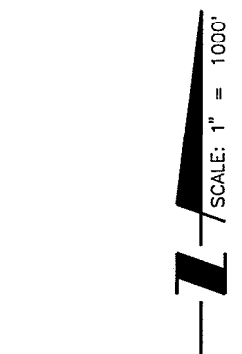
ORB. 53 PAGE 462
 ORB. 53 PAGE 459

POB
 ALTO ADAMS, JR.
 SW CORNER SECTION 13

REFERENCE WILSONMILLER PC DOCS NUMBER 185508 FOR DESCRIPTION
 ul 19, 2007 - 15:32:36 TOSBORNE\X:\SUR\04695\2L-911.DWG.dwg

*** NOT A SURVEY ***

ALTO ADAMS JR., EXHIBIT B
 STEWARDSHIP SENDING AREA



ACTIVITY	INITIALS/EMP. NO.	DATE	APPROVED:
RESEARCH:			
FIELD WORK/CREW CHIEF			
DRAFTED:	LNW/2241	3/07	
CHECKED BY:	BES/925	3/07	
FIELD BOOK/PAGE:	BRADLEY E. STOCKHAM, P.S.M.#6390		

WilsonMiller
 Planners Engineers Ecologists Surveyors • Landscape Architects Transportation Consultants

WilsonMiller, Inc.
 Naples Fort Myers Sarasota Bradenton Tampa Tallahassee Panama City Beach
 3200 Bailey Lane, Suite 208 Naples, Florida 34105-8507 • Phone 239-649-4040 Fax 239-643-5716 Web-Site www.wilsonmiller.com

DATE:	CLIENT:	FAMILY LANDS REMEMBERED, LLP.	
3/07	TITLE:	SKETCH OF DESCRIPTION	
SCALE:	BEING THE SOUTH 1/2 OF SECTION 13, TOWNSHIP 35 SOUTH		
1" = 1000'	RANGE 37 EAST, ST. LUCIE COUNTY, FLORIDA		
CROSS REFERENCE FILE NO.:	PROJECT NO.:	SHEET NUMBER:	FILE NO.:
	04695-000-005-22000	1 OF 1	2L-911