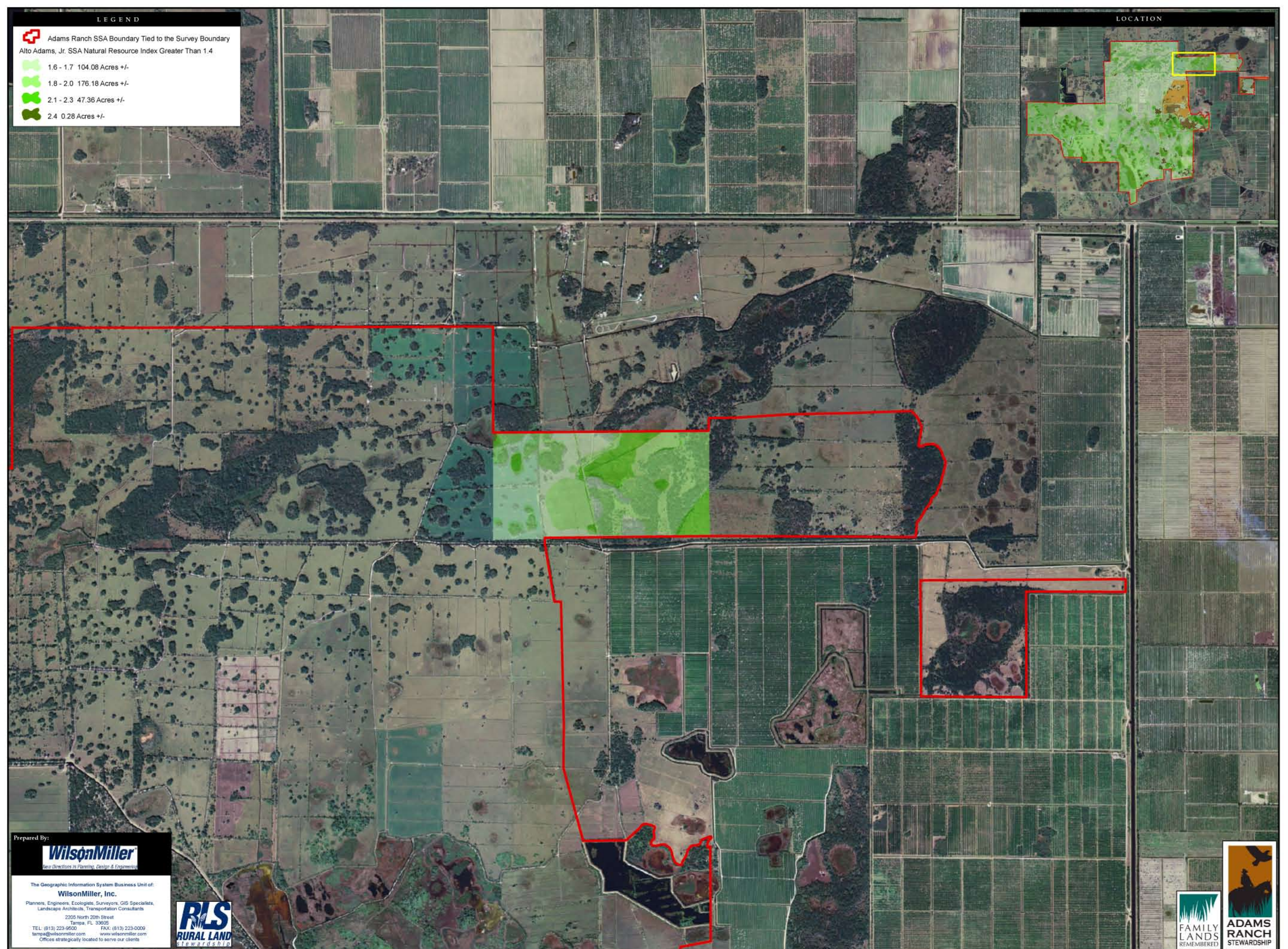


LEGEND

-  Adams Ranch SSA Boundary Tied to the Survey Boundary
-  Alto Adams, Jr. SSA Natural Resource Index Greater Than 1.4
-  1.6 - 1.7 104.08 Acres +/-
-  1.8 - 2.0 176.18 Acres +/-
-  2.1 - 2.3 47.36 Acres +/-
-  2.4 0.28 Acres +/-

LOCATION



Prepared By:



The Geographic Information System Business Unit of:
WilsonMiller, Inc.
 Planners, Engineers, Ecologists, Surveyors, GIS Specialists,
 Landscape Architects, Transportation Consultants
 2205 North 20th Street
 Tampa, FL 33605
 TEL: (813) 223-9500 FAX: (813) 223-0009
 tampa@wilsonmiller.com www.wilsonmiller.com
 Offices strategically located to serve our clients






FIGURE 6B: ALTO ADAMS, JR. SSA NATURAL RESOURCE INDEX GREATER THAN 1.4
 ST. LUCIE COUNTY RLSA

GENERAL NOTES
 This report was prepared using GIS data provided by various sources that may include but are not limited to federal, state, district and local agencies. WilsonMiller, Inc. does not warrant data provided by other sources for accuracy or for any particular use that may require accurate information. This map is for informational purposes only and should not be substituted for a site visit or other appropriate survey, or for zoning verification.
 © Copyright 2007 WilsonMiller, Inc. Unlawful Reproduction is Prohibited.