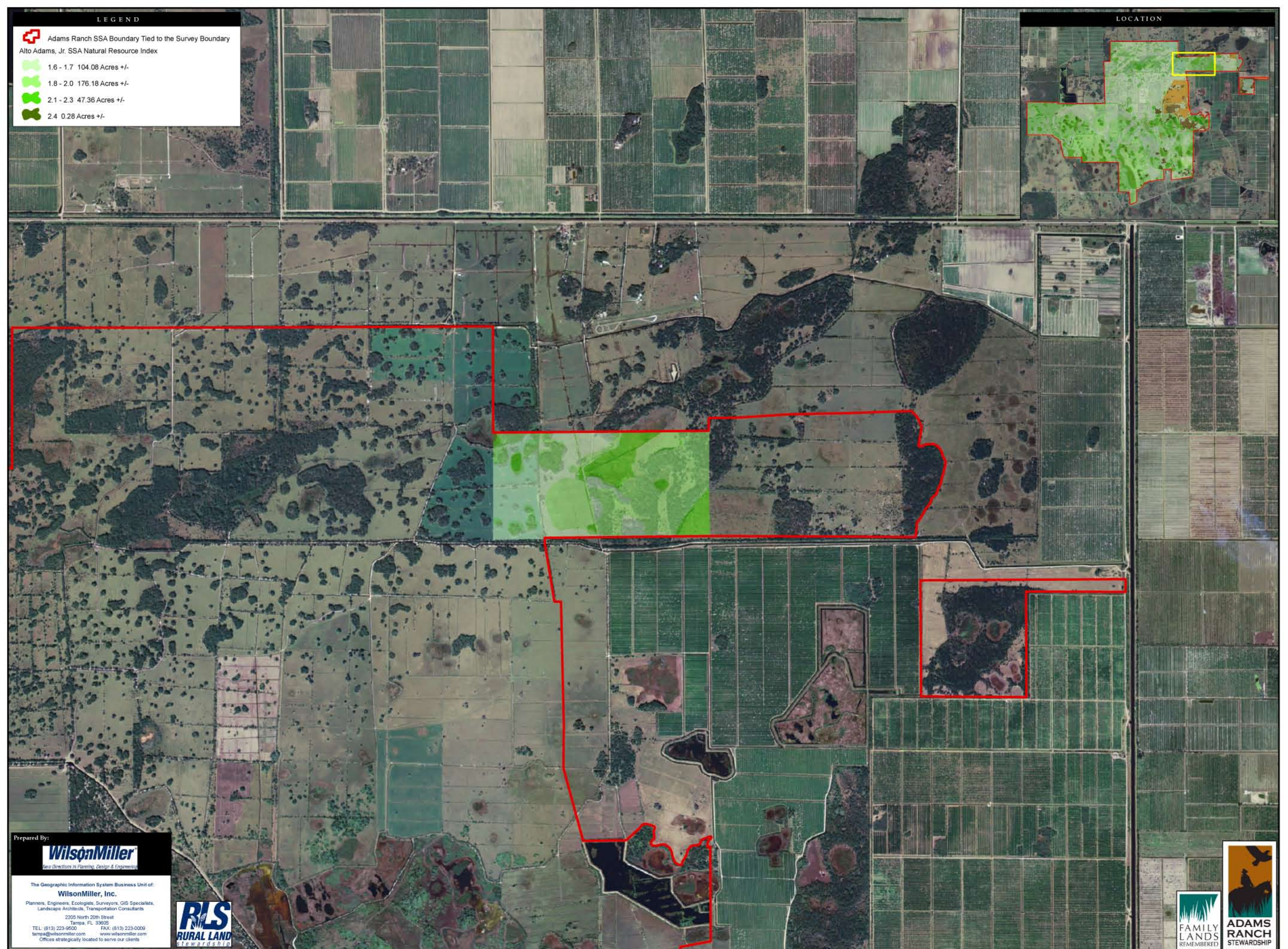


LEGEND

- Adams Ranch SSA Boundary Tied to the Survey Boundary
- Alto Adams, Jr. SSA Natural Resource Index
  - 1.6 - 1.7 104.08 Acres +/-
  - 1.8 - 2.0 176.18 Acres +/-
  - 2.1 - 2.3 47.36 Acres +/-
  - 2.4 0.28 Acres +/-

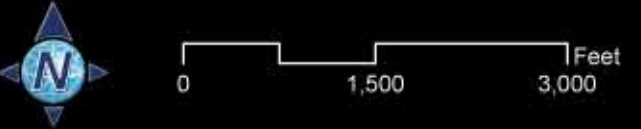
LOCATION



Prepared By:  
**WilsonMiller**  
*new Directions in Planning, Design & Engineering*

The Geographic Information System Business Unit of:  
**WilsonMiller, Inc.**  
 Planners, Engineers, Ecologists, Surveyors, GIS Specialists,  
 Landscape Architects, Transportation Consultants

2205 North 20th Street  
 Tampa, FL 33605  
 TEL: (813) 223-9500 FAX: (813) 223-0009  
 tampa@wilsonmiller.com www.wilsonmiller.com  
 Offices strategically located to serve our clients



**FIGURE 5B: ALTO ADAMS, JR. SSA NATURAL RESOURCE INDEX**  
 ST. LUCIE COUNTY RLSA

**GENERAL NOTES**

This report was prepared using GIS data provided by various sources that may include but are not limited to federal, state, district and local agencies. WilsonMiller, Inc. does not warrant data provided by other sources for accuracy or for any particular use that may require accurate information. This map is for informational purposes only and should not be substituted for a site visit or other appropriate survey, or for zoning verification.

© Copyright 2007 WilsonMiller, Inc. Unlawful Reproduction is Prohibited.